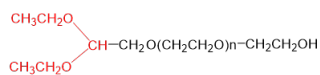


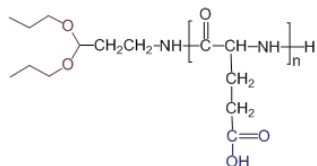
Aldehyde and acetal



Acetal-PEG-OH/Diethoxy-PEG-OH

\$280.00 – \$650.00 (11334)

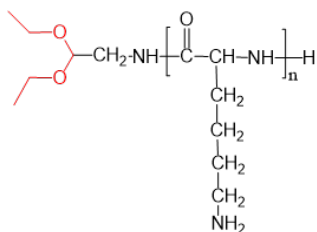
- Molecular weight: 1000, 2000, 3500, 5000, 10K
- Package size: 100 mg, 500 mg, 1g



Acetal-Poly-L-Gutamic acid/Acetal-pGlu

\$260.00 – \$1,260.00 (11252)

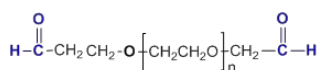
- Molecular weight: 2500 (x=20), 5000 (x=38), 10K (x=76), 20K (x=154)
- Package size: 100mg, 500mg, 1g



Acetal-Poly-L-lysine

\$280.00 – \$1,200.00 (11222)

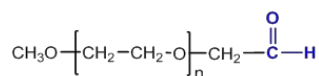
- Molecular weight: 3300 (X=20), 8,200 (X=50), 16,000 (X=100), 32,000 (X=200)
- Package size: 100mg, 500mg, 1g



ALD-PEG-ALD

\$300.00 – \$1,200.00 (4411)

- Molecular weight: 1000, 2000, 3400, 5000, 10K, 20K
- Package size: 1g, 5g, 10g



MPEG-ALD

\$300.00 – \$800.00 (2529)

- Molecular weight: 1000, 2000, 5000, 10K, 20K
- Package size: 1g, 5g