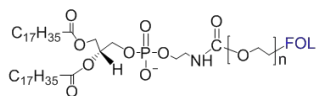
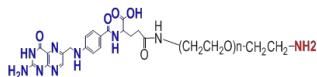


## Folic acid (Fol)



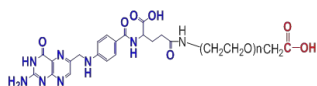
### DSPE-PEG-Folate

- \$385.00 – \$425.00** (4666)
- Molecular weight:1000, 2000, 3400, 5000
  - Package size:50mg



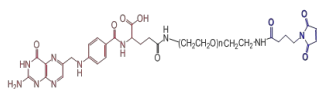
### Folate-PEG-Amine

- \$360.00 – \$600.00** (11409)
- Molecular weight:1000, 2000, 3500, 5000, 10K
  - Package size:50mg, 100 mg



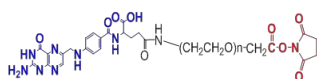
### Folate-PEG-COOH

- \$360.00 – \$600.00** (11379)
- Molecular weight:1000, 2000, 3500, 5000, 10K
  - Package size:50mg, 100 mg



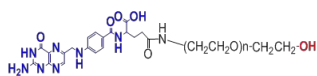
### Folate-PEG-Maleimide

- \$385.00 – \$650.00** (11495)
- Molecular weight:1000, 2000, 3500, 5000, 10K
  - Package size:50mg, 100 mg



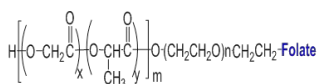
### Folate-PEG-NHS

- \$360.00 – \$600.00** (11395)
- Molecular weight:1000, 2000, 3500, 5000, 10K
  - Package size:50mg, 100 mg



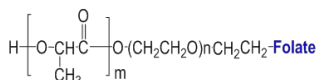
### Folate-PEG-OH

- \$260.00 – \$480.00** (11457)
- Molecular weight:1000, 2000, 3500, 5000, 10K
  - Package size:50mg, 100 mg



### PLGA-PEG-Folate

- \$360.00 – \$650.00** (11424)
- PLGA Molecular Weight:5000, 10k, 20k
  - PEG Molecular Weight:2000, 5000
  - Package size:50mg, 100mg



### PLLA-PEG-Folate

- \$300.00 – \$480.00** (11440)
- PLA Molecular Weight:5000, 10k, 20k
  - PEG Molecular Weight:2000, 5000
  - Package size:50mg, 100mg